

[www.liftek.biz](http://www.liftek.biz)

Toll Free 855-334-6863 or 870-881-9574

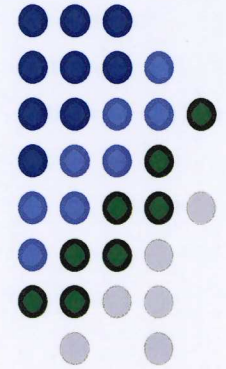
# FREQUENTLY ASKED QUESTIONS



# FAQ's

## Oil Hound Lift Unit:

- \* Dimensions: 8' long; 54" high; 3' wide with gear box
- \* Composition: Tub, Lid, Related Components, Screw and Pawl are made of stainless steel
- \* Other metal components are composed of carbon steel
- \* Dry weight: Approximately 1,750 lbs.
- \* The Tub will hold 124 fluid gallons
- \* Maximum service depth is 4,000'
- \* Speed of Descent & Ascent: 0-6 feet per second
- \* Carbon Steel surfaces are either painted or powder coated
- \* Stainless Steel surfaces in general will be left unpainted
- \* Gear Box: 60 to 1 gear ratio



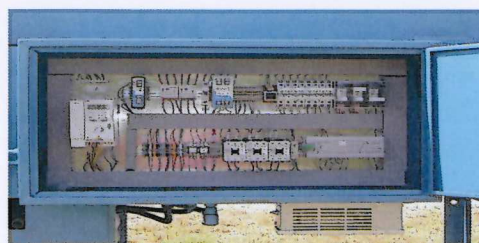
## The Bucket:

- \* Fluid Displacement: 50' tube= 10 gallons  
75' tube= 15 gallons
- \* Diameter: 3.06" OD; 2.5" ID
- \* Length: 50'-75'
- \* Composition: Rubber & PVC  
Head & Foot: Stainless Steel
- \* Weight: Approximately 100 lbs



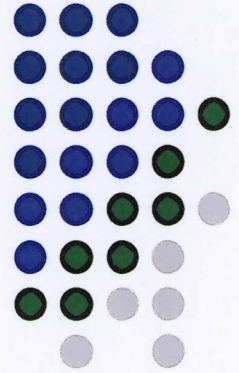
## Electrical Power Requirements:

- \* Generator: Minimum 7,500 watts, 220 volt single phase
- \* Utility Current: 220 volts





# FAQ's



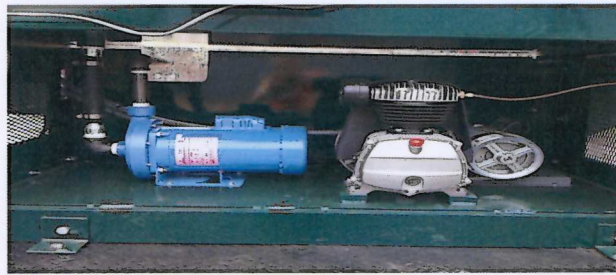
## Electrical Components:

### Motors:

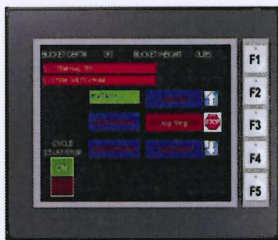
- \* 3 hsp single phase (use with generator or utility power); or 5 hsp triple phase (use with utility power)
- 1.5 hsp centrifugal transfer pump

### Compressor:

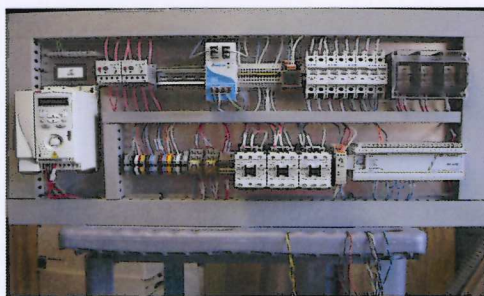
- \* Maximum capacity is 7.5 cubic feet per minute
- \* Utilizes 1 hsp single phase motor



## Human/Machine Interface: (HMI)



## Wiring



## Transformer

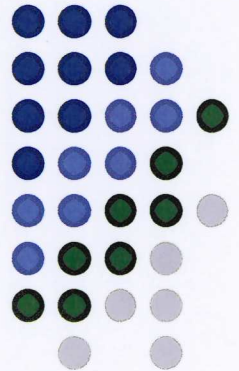
- \* 440/480 three phase convert to 220/240 single phase, 5 KVA (optional—required for 5 hsp motor)



# FAQ's

## Rope:

- \* Breaking Strength of 5,900 lbs
- \* Size: 3/8" OD
- \* Composition: High tenacity polyester single braid with Maxi-jacket urethane coating



## Trailer (Optional):

- \* Dimensions: 16' long, 6' wide; approximately 16" to top of trailer floor
- \* Dual Axel
- \* Ball Connection
- \* Road Worthy
- \* Special Modifications
- \* Weight approx. 1,200 lbs
- \* Mobile- requires vehicle



## Power Reel (Optional):

- \* Size- Cage is approx. 5'h, 2.5'w, 2.5'l
- \* Gear box has 60 to 1 gear reduction
- \* Utilizes 1 hsp single phase 220 electric motor
- \* Versatile- Can be mounted on truck or trailer
- \* Can be run on utility or generated power
- \* Approx. 300 lbs





# FAQ's

## Set-Up Information:

- \* Personnel Required: One man fully trained  
Two men semi trained
- \* Set-Up time: One hour
- \* Training Provided

## Required Skills:

- \* Ability to follow simple operational instructions
- \* Ability to properly align, park and level unit

